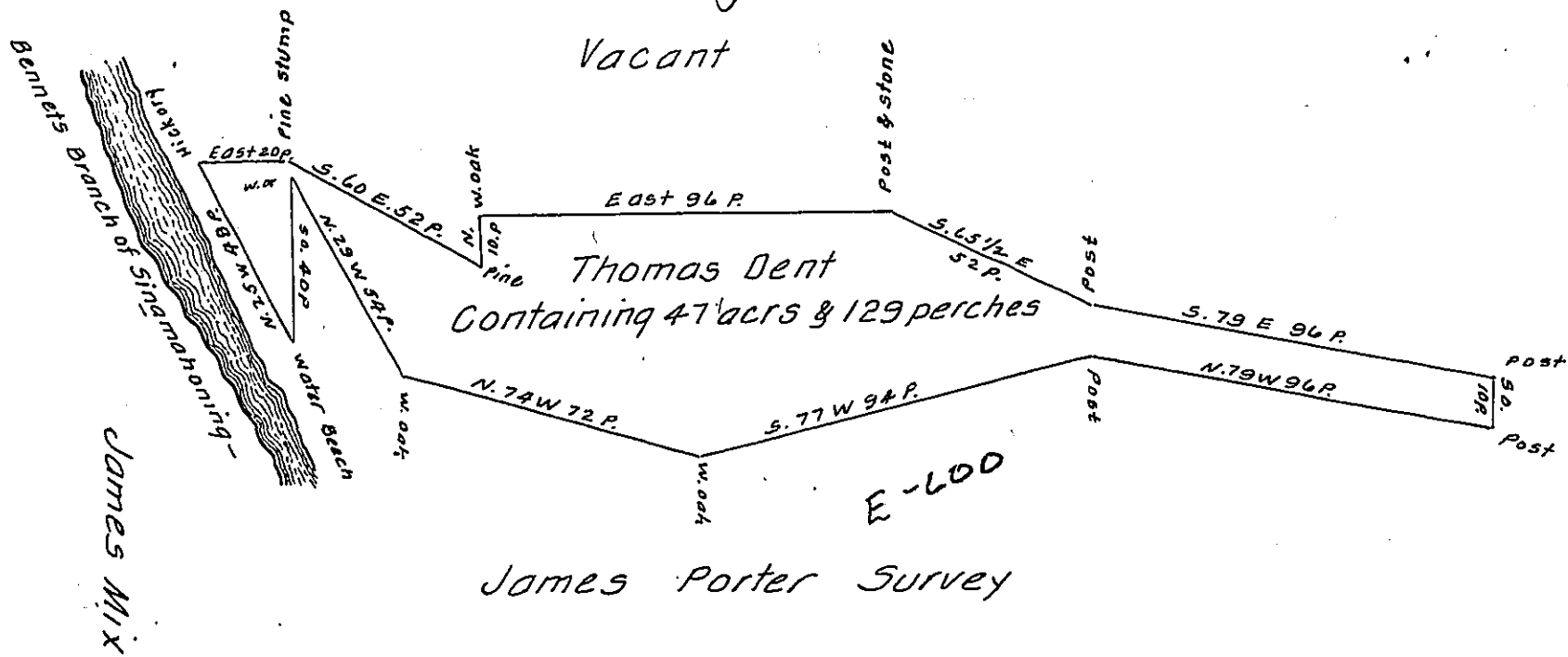


C-186-140



A Draught of a tract of Land Situate in Gibson township in the County of Elk. Surveyed this 13 day of August 1856 for Thomas Dent By virtue of his Warrant bearing date July 11th 1856. Containing forty Seven acre- & one hundred & twenty nine perches with the allowance of six per Cent for Roads &c.

To James Porter Brawley Esq. } Georg- F. Schaefer C.S.
 Surveyor General } for Elk County

IN TESTIMONY that the above is a copy of the original remaining on file in the Department of Internal Affairs of Pennsylvania, made conformably to an Act of Assembly approved the 16th day of February, 1833, I have hereunto set my Hand and caused the Seal of said Department to be affixed at Harrisburg, this twentieth day of November 1907.

Henry Hoover
 Secretary of Internal Affairs.